



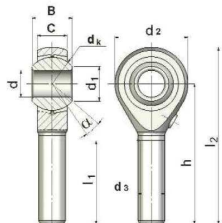
## Definitions

### Dimensional standards

#### ISO 12240-4

The international standard sets the dimensions of rods with spherical bearing assembled. It also specifies tolerances relative to the dimensions.

The diameter of the head  $d_2$  is sized at the lower value of the standard, which gives our rod-end bearings minimal size and weight, thus ensuring total interchangeability with any other rod-end bearing meeting the standard.



#### European and American aerospace standards

Schaublin SA manufactures and distributes spherical bearings and self-lubricated bushes to the following standards:

EN2584, EN2585, EN3048, EN4613, EN2022, EN2023, EN2501, AS14101, AS14102, AS14103, AS14104, AS81935/1, AS81935/2, AS81820/1, AS81820/2, AS81820/3, AS81820/4, AS81934/1, AS81934/2, AS81936/1, AS81936/2, AS21154, AS21155, AS21240, AS21241, AS21242, AS21243, EN2285, EN2286, EN2287, EN2288

### Field of application



Rod-end and spherical bearings are designed to be used between the fixed or moving components of mechanical assemblies.

- Assembly, alignment
- Transmission of movements, loadings
- Joints

Spherical bearings are designed for applications with movements at low rotation speeds. They are sized according to the loading and operating cycle required.



## Standard programme



### Description

**SME 12.40**

#### SCHAUBLIN

Shape	M:	Rod-end bearing Male
	ML:	Rod-end bearing Male, left-hand thread
	F:	Rod-end bearing Female
	FL:	Rod-end bearing Female, LH thread
	S:	Spherical (to be fitted in a mount)
Type of Slip	_:	Steel / Bronze, without Lubricator
	G:	Steel / Bronze, with Lubricator
	A:	Steel / Steel
	E:	Steel / Uniflon® (self-lubricating fabric)
Size		Nominal size
Series	_:	Standard
	.20:	Special thread
	.40:	High tensile
	.45:	Stainless steel
	.50:	Competition
(Derivatives)	.30:	Made according to Male spherical bearing drawing

### Series

	Mechanical industry	Food and vulnerable products	Sport, competition	Benefit	Special features
-	•	•	•	Excellent resistance to impacts, static loadings and vibrations	General mechanical standard
.40	•	•	••	High static and dynamic loadings	Body of rod made from high tensile steel
.45	•	•••		Use in a corrosive environment	Stainless steel
.50	•		•••	Very high static and dynamic loadings, at low speed	Magnetic fault inspection





## Slip

Type	Friction	Maintenance	Benefit	Special features
<b>G</b>	Steel / Bronze Steel / Steel (Series 50)	Regular lubrication	Good radial and axial strength	The lubricator is available on male and female rods from size 8 Working temperature 150°C max (special lubrication)
<b>A</b>	Steel / Steel	Regular lubrication	Excellent impact resistance Excellent radial strength	Version not available on rod-end bearings Without lubricator Working temperature 300°C max (special lubrication)
<b>E</b>	Steel / Uniflon® E	Maintenance-free, self-lubricating fabric	Excellent impact resistance Excellent radial strength	The Uniflon® E self-lubricating fabric bonded into the outer bush ensures optimal life Working temperature 120°C max

## Construction

	Serie s	Inner bush	Outer bush	Benefit	Special features
<b>SM..</b>	-	Chrome steel	Bronze spacers	The design with spacers provides very good axial strength	
<b>SMG..</b>	.40	Chrome steel			
<b>SF..</b>	.45	Stainless steel			
<b>SFG..</b>	.50	Chrome steel	Stainless steel spacers		
<b>SS..</b>	-	Chrome steel	Bronze spacers	The steel construction guarantees very substantial radial strength	The steel/steel construction and special lubrication enables a working temperature of 300°C
	.45	Stainless steel			
<b>SSA..</b>	-	Chrome steel	Cage steel		
	.45	Stainless steel	Cage stainless steel		
	.50	Chrome steel	Cage steel		
<b>SME..</b>	-	Chrome steel	Uniflon® E self-lubricating fabric	Uniflon® E PTFE fabric bonded into the outer bush improves slip and increases life. Requires no maintenance	The damping properties of Uniflon® E self-lubricating fabric are ideal for applications with vibration
<b>SFE..</b>	.40	Chrome steel			
	.45	Stainless steel			
	.50	Chrome steel			
<b>SSE..</b>	-	Chrome steel	Uniflon® E self-lubricating fabric		
	.45	Stainless steel			
	.50	Chrome steel			

## Options and derivatives from standard\*

<b>Options</b>	Special thread	Cetop...
	Special lubrication	For life, high pressure, high temperature
	Specific torque	
	Specific play	
	Material traceability	
	Magnetic fault inspection	Standard on .50 grade
<b>Derivatives</b>	Neoprene protection	
	Special materials	
	Length threaded special	
	Specific head diameter	
	Inner bush with lugs	
	Sealed spherical bearing	

\* Contact us for any special requirements



**RODAVIGO, S.A.**  
RODAMIENTOS VIGO, S.A.

[www.rodavigo.net](http://www.rodavigo.net)

**+34 986 288118**  
Servicio de Att. al Cliente



***For any special requirements  
or other dimensions,  
please ask***